



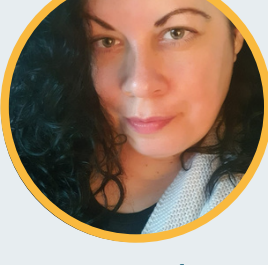
Meet the Team



Elizabeth Learoyd
CEO

Elizabeth has worked in the voluntary and community sector for various Healthwatch and Advocacy services throughout England over the last 8 years. As a passionate advocate for people's rights and community voice, Elizabeth is committed to ensuring the voices of those who use health and social care services in Bedford Borough are at the forefront of service design and delivery.

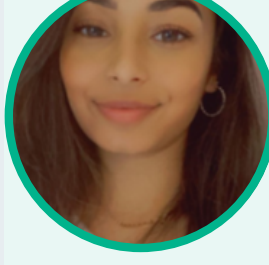
✉ [Contact Liz](#)



Emma Freda
Deputy CEO

As Deputy CEO Emma is responsible for ensuring compliance by the organisation, with its regulatory, statutory and legal obligations. She is also responsible for planning and managing the organisation's operational duties such as staffing and resourcing. She is committed to ensuring that public voice is heard, holding decision makers to account and working collaboratively to improve the experiences of local residents.

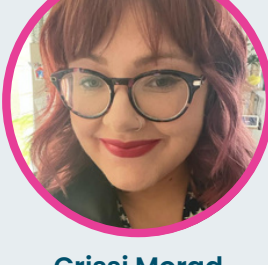
✉ [Contact Emma](#)



Shanice Kazaly
Community Outreach Lead

As our Community Outreach Lead, Shanice has an enthusiasm for working with children & young people and is keen to bring her knowledge to the forefront of Healthwatch Bedford Borough, whilst also championing other seldom heard voices. Shanice has previously worked for the NHS in primary care and on commitment to PALS at one of our local acute NHS Trust's

✉ [Contact Shanice](#)



Crissi Morad
Digital Communications Officer

Crissi is our Digital Communications Officer and has over 10 years' experience working in the third sector, as well as working in Communications for the past 4 years. Crissi has BA in Advertising and Marketing and has a passion for creating engaging content and managing our social media and website, as well as creating engaging animations.

✉ [Contact Crissi](#)



Tracy Cresswell
Volunteer Lead

Tracy's role is to support volunteers - this includes recruiting and inducting new volunteers, providing training, and ensuring that our community engagement activities are well supported. As part of the team, Tracy is also out and about in the community, listening to people's views and experiences of health and social care and feeding this back to help shape the way services are improved in the future.

✉ [Contact Tracy](#)

Outreach and Engagement



Healthwatch Bedford Borough, alongside learning disabilities service users and staff from the **Centre For Independent Living**, took part in sewing and fabric painting sessions for Bedfordshire Community Health Service's NHS 75th anniversary quilt.

The fabric squares produced are now being sewn into the quilt and this will be displayed across both NHS settings in Bedfordshire and East London.



Emma, Shanice and Ashok spent 2 days with Circle MSK Bedfordshire doing field work, listening to patient feedback.

Reports



[Listening Survey](#)



[Work Programme](#)

In February and March 2023, Healthwatch Bedford Borough completed a Listening Survey, talking to people about what they wanted us to focus our work on for the next 12 months. We received 135 responses to our survey and this helped us to determine our local work priorities for the year ahead.

Events

Calling residents of Bedford Borough

Looking for local events?
Our event page has local events that may interest you!

Have an event you want to promote?

Send your information to our Enquiries email and we will add it.



[Find out more](#)



[Find out more](#)



[Find out more](#)

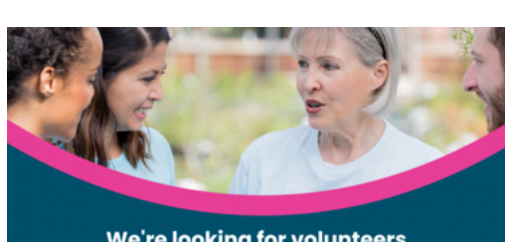


[Find out more](#)

[See More Events](#)

[Share your event](#)

Get involved



Healthwatch Bedford Borough is looking for people who are passionate about making a difference to health & care services to join its Advisory Board.

[Find out more](#)

Stakeholder information

New CUH Directions phone app helps patients find the way



Patients have led the way in a project to make it easier to navigate your way around Addenbrooke's and the Rosie hospitals.

To use the app, simply enter your start and end points. The app will then show you an illustrated route around the hospitals with photos of corridors and key landmarks. This includes simple text instructions which can be increased in size or read by a screen reader.

[Read more](#)

[App Store](#)

[Google Store](#)

Healthier Together - a Bedfordshire, Luton & Milton Keynes Initiative

This website provides young people, parents and pregnant women across Bedfordshire, Luton & Milton Keynes with consistent and high-quality advice from local health professionals.

You'll find clear information on common childhood illnesses, including advice on what 'red-flag' signs to look out for, where to seek help if required and how long your child's symptoms are likely to last.

Healthier Together is a partnership project which continues to grow by putting children, young people and families needs at the heart of the website.

[Read More](#)



WE NEED YOU!

Patient Participation Group

Are you interested in finding out how to get involved in shaping the patient pathway for spinal pain and spinal surgery?

We are setting up a Patient Participation Group and are looking for patients, carers and relatives from all age groups, social and cultural backgrounds to join us. This is your chance to 'have a say' in Spinal pathways in North West and Central London, West Hertfordshire and Bedfordshire.

The North West London Spinal Network has been established to improve the management of spinal surgery and the pathways leading to spinal surgery. We aim to support improved quality of care for patients and equity of access to spinal services. More information can be found on our website

www.nwlonsonspinalnetwork.nhs.uk

Contact details: Abbi Taylor, NWLSN Manager, abigail.taylor10@nhs.net

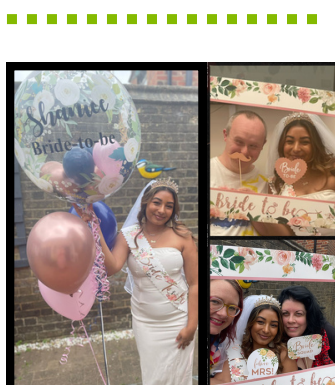
Other News!

On Monday 5th June, Healthwatch Bedford Borough hosted a pre-wedding lunch for all teams and service users from our building on Gadsby Street.

Many of you will have known Shanice, our Community Outreach Lead, for many years. She joined the organisation as an Apprentice Administrator in 2014 and has been a vital part of the team.

We hope you will join us in wishing her and her new husband well as they embark on their new lives as man and wife.

Congratulations!



You are receiving this email because you signed up or are a valued stakeholder of Healthwatch Bedford Borough

[Unsubscribe](#)