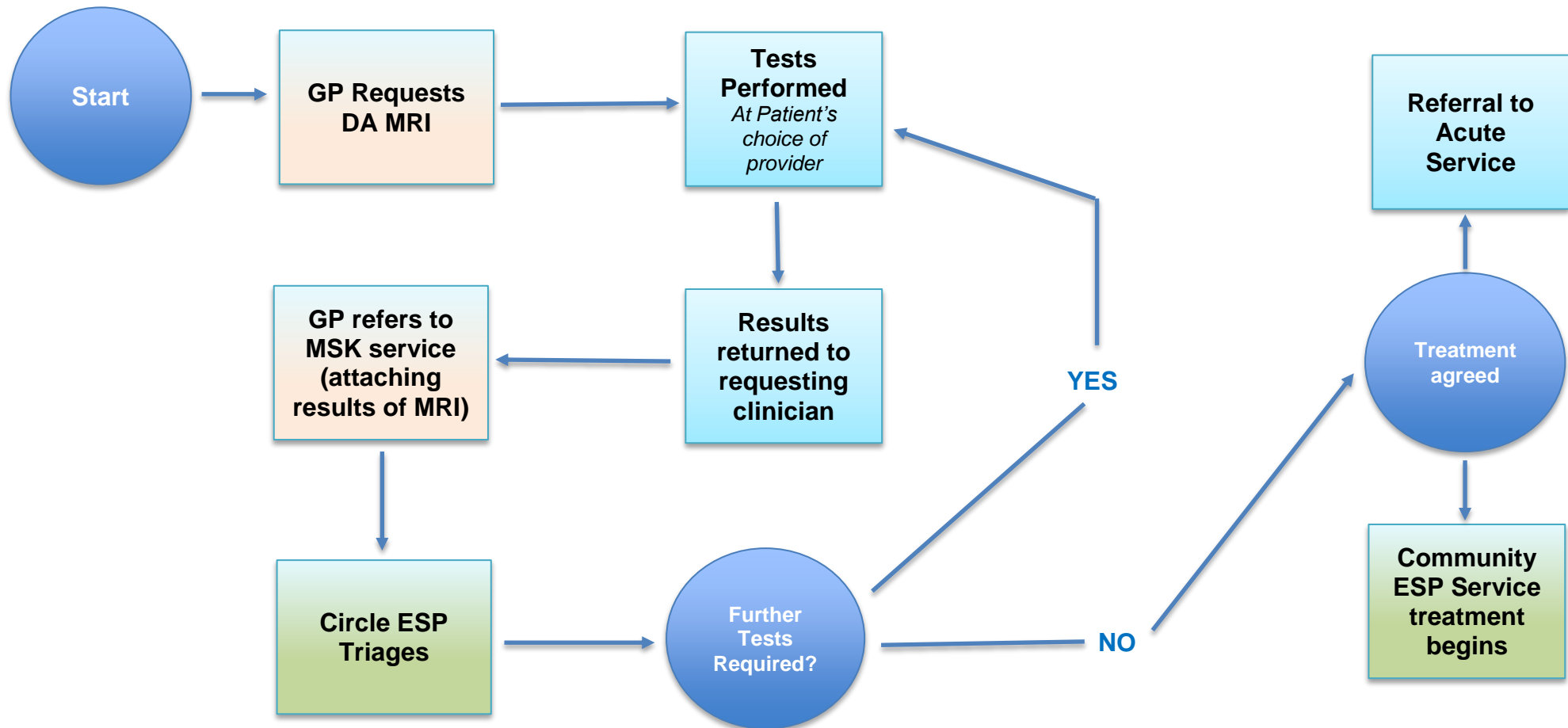
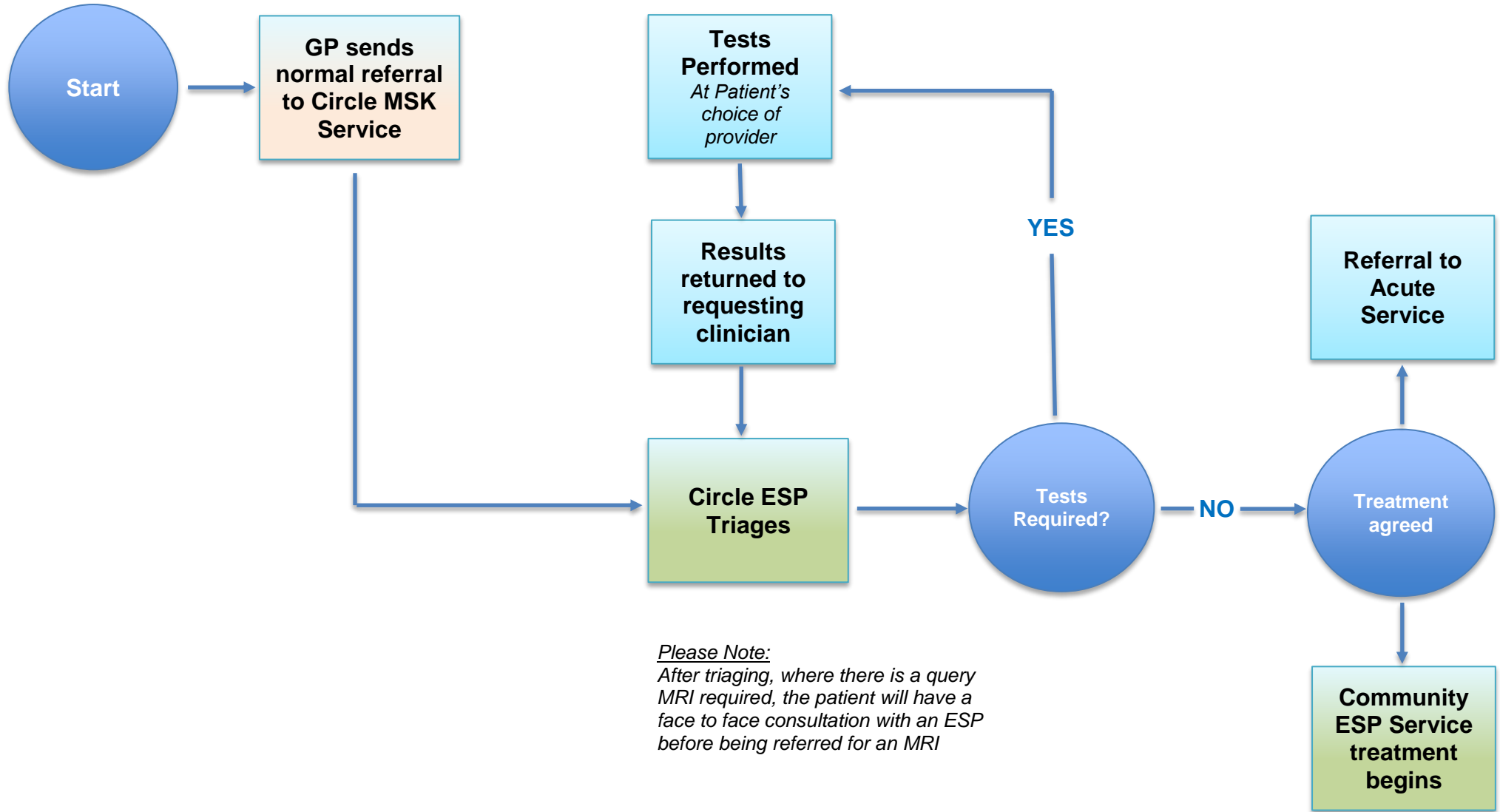


### MRI request for MSK Related Conditions – New Pathway May 2018

#### Existing Primary Care Pathway



**New Primary Care Pathway**



*Please Note:  
After triaging, where there is a query MRI required, the patient will have a face to face consultation with an ESP before being referred for an MRI*

**Exceptions to new pathway:**

- **Cancer or suspected cancer** (*GPs will follow the 2 week wait pathway*)
- **Cauda Equina Syndrome** (*damage to the bundle of nerves below the end of the spinal cord known as the cauda equina*)
- **Significant trauma;** (*fracture/dislocation*)
- **Neurological deficit** (*abnormal function of a body area due to weaker function of the brain, spinal cord, muscles or nerves*)
- **Infections** (*including suspected septic arthritis*)
- **Inflammatory arthritis** (*including rheumatoid arthritis, psoriatic arthropathy, inflammatory bowel disease, Still's disease, scleroderma and systemic lupus*)
- **Temporal arteritis** (*chronic inflammation of the arteries of the head, which supply oxygenated blood to portions of the head and brain*)
- **Acute tendon rupture**
- **Significant clinical suspicion** that there is a condition requiring clarification that may be serious requiring urgent intervention or diagnostic doubt that there may be a serious underlying condition